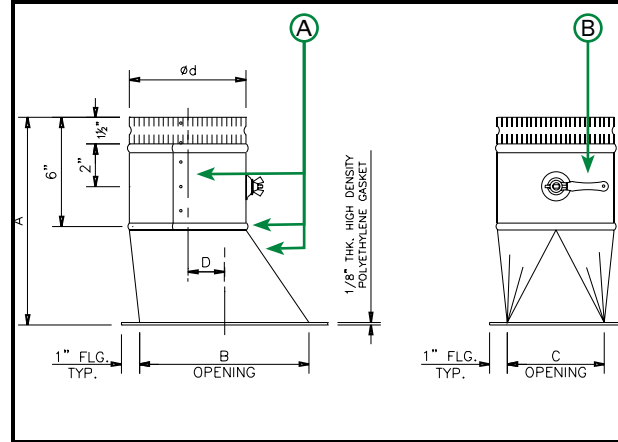


# Tapered High Efficiency Takeoff



## Technical Data

- Pre-sealed with gasket made of EPDM rubber and proprietary co-polymer
- Zero VOCs
- Galvanized Steel (ASTM A653 and A924)
- G-60 Galvanized Coating (ASTM A653 and ASTM A90)
- Available in Specialty Metals:
  - G-90 Galvanized Steel
  - Aluminum (ASTM B209 Alloy 3003 Temper H14)
  - 304 Stainless Steel (ASTM A480 2B Finish)
- Pressure Rating: Designed per SMACNA Third Edition 2005 Section 4.8 Figure 4-6 Branch Connections
- Dimensional Tolerance:  $\pm 1/4"$

**A.** HETOs now come standard with sealed joints! The riveted seam on the collar and boot, as well as the co-latch seam between the collar and boot are sealed with the GreenSeam integral gasket. Unsealed fittings are available upon request.

**B.** Non-dampered HETOs are supplied with a 3/8" knock-out. Dampered HETOs are supplied with 24GA. damper blades and Ductmate's proprietary low-leakage hardware. See Appendix A.

## Product Availability

Size ( $\phi d$ )	Gauge Availability		Quantity		Dimension			
	26 Ga.	24 Ga.	Layer	Skid	A	B	C	D
4"	Yes	-	35	210	10 1/2"	7"	4"	1 1/2"
5"	Yes	Yes	30	180	10 1/2"	9"	5"	2 1/2"
6"	Yes	Yes	30	180	10 1/2"	9"	5"	2"
7"	Yes	Yes	18	120	10 1/2"	11	5	2 1/2"
8"	Yes	Yes	20	120	11 1/2"	12"	6"	2 1/2"
9"	Yes	Yes	20	120	11 1/2"	13"	7"	2 1/2"
10"	Yes	Yes	12	72	11 1/2"	14"	8"	2 1/2"
12"	Yes	Yes	9	54	11 1/2"	16"	10"	3"
14"	Yes	Yes	6	36	12"	18"	12"	3"
16"	-	Yes	4	24	13"	20"	14"	3"
18"	-	Yes	4	24	13"	22"	16"	3"
20"	-	Yes	4	24	13"	24	18	3"

Dampered fittings are available with 1 1/2" or 2" Stand-Off. See Appendix B on page 27.

## Part Number Schematic

Example: **HTS1510GA26D38** = Tapered HETO for 10" Pipe in 26Ga. Galvanized Steel, with a Solid Rod Damper and 1 1/2" Stand-Off

<b>HT</b> Tapered High Efficiency Take-Off	<b>S15</b> Stand-Off S15 - 1 1/2" S2 - 2" (Opt. on Dampers Only)	<b>10</b> Tapered HETO Diameter ( $\phi d$ )	<b>GA</b> Material GA-Galvanized (Std.) AL - Aluminum S4 - 304 S.S	<b>26</b> Gauge GA - 26, 24 AL - 32 S4 - 26	<b>D</b> Damper (Opt.)	<b>38</b> 3/8" Solid Rod (Opt. on Dampers Only) See Appendix C on page 28.
---	--	---	--	---	---------------------------	--

Items in green denote available options