

**569J**

**60Hz, Sizes 07 - 25**

**AIR-COOLED CONDENSING UNITS  
WITH PURON® (R-410A) REFRIGERANT**



## Submittal Data



**Intertek**

16-25 Models



Use of the AHRI Certified TM Mark indicates a manufacturer's participation in the program. For verification of certification for individual products, go to [www.ahridirectory.org](http://www.ahridirectory.org).

**Certified to  
ISO 9001**



07-14 Models



### DESCRIPTION

569J units are air-cooled condensing units which are easily connected by refrigerant lines and low voltage control wiring to matching Bryant packaged air-handling units or other suitable evaporator units to provide customized packages covering a wide range of cooling requirements. Powerful, direct-drive axial-flow fans are mounted horizontally with vertical coils, resulting in a desirable low silhouette. They are ideal for new construction or renovation where quality and performance are required.



### STANDARD FEATURES

- Puron (R-410A) HFC refrigerant
- Single-stage cooling capacity control on 07-14 models
- Single circuit two-stage cooling capacity control on 07 and 08 models.
- Two-stage cooling capacity control on 12 to 25 models
- All models utilize Round Copper Tube/Aluminum Plate Fin (RTPF) condenser coil.
- Cooling operating range up to 125°F (52°C) and down to 35°F (2°C)
- Brass suction and liquid line service valves
- Fully Hermetic Scroll compressor with crankcase heater
- New terminal board facilitating simple safety circuit troubleshooting and simplified control box arrangement. 24-volt 75va control system
- High and low pressure switches.
- UL or UL, Canada listed (07-14 models) applies to standard units; 575-volt units UL, Canada only.
- ETL listed (16-25 models)
- Comfort Alert™ Diagnostic Board:
  - LED Go-No-Go and fault code
  - Built in time guard anti short cycle
  - Phase protection
  - Fault code retention logic
  - Low voltage compressor contactor protection
- Full perimeter base rails with built-in rigging adapters and fork truck slots.
- Pre-painted exterior panels and primer-coated interior panels tested to 500 hours salt spray protection.
- Direct drive permanently lubricated condenser fan motors.
- All units factory run tested.
- Compressors mounted on independent vibration isolators
- Standard limited parts warranty,
  - 5-year compressor parts
  - 1-year condenser coil parts
  - 1-year parts

## PERFORMANCE DATA

Cooling Capacity: \_\_\_\_\_ Btuh      Compressor Power Input: \_\_\_\_\_ kW  
Ambient Air Temperature: \_\_\_\_\_ °F      Compressor Fan Power Input: \_\_\_\_\_ kW  
Saturated Suction Temperature: \_\_\_\_\_ °F      Compressor Unloading Steps: \_\_\_\_\_ %  
Saturated Condensing Temperature: \_\_\_\_\_ °F      Minimum Ambient Air Temperature  
Standard Unit: \_\_\_\_\_ °F

## ELECTRICAL DATA

Power Supply to Unit \_\_\_\_\_ Volts \_\_\_\_\_ Phase \_\_\_\_\_ Hz  
Minimum Circuit Amps \_\_\_\_\_ Maximum Overcurrent Protection \_\_\_\_\_

## SUBMITTAL DATA

Job Name \_\_\_\_\_  
Architect \_\_\_\_\_  
Engineer \_\_\_\_\_  
Contractor \_\_\_\_\_  
Unit Designation \_\_\_\_\_

## OPTIONS AND ACCESSORIES

### FACTORY-INSTALLED OPTIONS (FIOPs)

- E-Coated Condenser Coil
- Pre Coat on Condenser Coil
- Copper/Copper Condenser Coil
- Motormaster<sup>®</sup> Low ambient head pressure controller, down to -20°F (-29°C)
- Non-fused disconnect
- Hot Gas By-Pass (569J 12, 16, and 25 models only)
- Powered 115-volt convenience outlet
- Non-powered 115-volt convenience outlet
- Condenser hail guard - louvered style

### OPTIONAL WARRANTIES

- Complete Unit Parts only up to 5 years
- Complete Unit Parts and Labor up to 5 years

Many other optional warranties are available.  
See the *Commercial Start-Up and Optional Extended Warranty Price* price pages for further information.

### FIELD INSTALLED ACCESSORIES

- Motormaster<sup>®</sup> Low ambient head pressure controller, down to -20°F (-29°C)
- Winter start kit, down to 25°F (-4°C)
- Suction Line Accumulator
- Liquid Line Solenoid Valve
- Solenoid Coil
- Sight Glass
- Condenser hail guard - louvered style
- Thermostats and thermostat accessories

# CERTIFIED DIMENSION 569J\*07, 08, 12, 14



P.O. BOX 4808  
UNITED TECHNOLOGIES SPRINKLER CARRIER  
13271

THIS DOCUMENT IS THE PROPERTY OF CARRIER CORPORATION  
AND IS NOT TO BE REPRODUCED OR TRANSMITTED IN ANY FORM  
WITHOUT THE WRITTEN CONSENT OF CARRIER CORPORATION.  
SUBMISSION OF THESE DIMENSIONS OR DOCUMENTS DOES NOT CONSTITUTE ANY PERFORMANCE OR ACCEPTANCE OF CONTRACT.

UNIT	ELECTRICAL CHARACTERISTICS	STD. UNIT WT.		CORNER A		CORNER B		CORNER C		CORNER D		CENTER OF GRAVITY			UNIT HEIGHT			
		LBS.	KG.	LBS.	KG.	LBS.	KG.	LBS.	KG.	LBS.	KG.	X	Y	Z	H			
569J-07A (MCHX)	208/230-3-60-460-3-60-575-3-60	328	149	128	58	68	31	62	28	70	32	21	1533.41	19	1482.61	13	1330.21	42-3/8 [1076.01]
569J-08A (MCHX)	208/230-3-60-460-3-60-575-3-60	353	160	138	63	72	33	65	29	78	35	19	1482.61	23	1584.21	13	1330.21	42-3/8 [1076.01]
569J-12A (MCHX)	208/230-3-60-460-3-60-575-3-60	418	190	165	75	85	39	78	35	90	41	23	1584.21	20	1508.01	15	1381.01	50-3/8 [1279.21]
569J-14A (MCHX)	208/230-3-60-460-3-60-575-3-60	431	196	162	73	82	37	92	42	95	43	19	1482.61	23	1584.21	15	1381.01	50-3/8 [1279.21]
569J-12D (MCHX)	208/230-3-60-460-3-60-575-3-60	499	226	193	88	111	50	72	38	123	56	20	1508.01	23	1584.21	15	1381.01	50-3/8 [1279.21]
569J-14D (MCHX)	208/230-3-60-460-3-60-575-3-60	505	229	190	86	88	40	76	34	151	68	20	1508.01	24	1609.61	15	1381.01	50-3/8 [1279.21]
569J-07A (RTPF)	208/230-3-60-460-3-60-575-3-60	389	176	141	64	96	44	62	28	91	41	18	1457.21	24	1609.61	21	1533.41	42-3/8 [1076.01]
569J-08(A,B) (RTPF)	208/230-3-60-460-3-60-575-3-60	391	177	142	64	96	44	62	28	91	41	18	1457.21	24	1609.61	21	1533.41	42-3/8 [1076.01]
569J-08(G,H) (RTPF)	208/230-3-60-460-3-60-575-3-60	430	195	142	64	96	44	76	34	111	50	18	1457.21	24	1609.61	21	1533.41	42-3/8 [1076.01]
569J-12A (RTPF)	208/230-3-60-460-3-60-575-3-60	490	222	177	80	120	54	78	35	114	52	18	1457.21	24	1609.61	24	1609.61	50-3/8 [1279.21]
569J-14A (RTPF)	208/230-3-60-460-3-60-575-3-60	598	271	195	88	142	64	110	50	151	68	20	1508.01	25	1635.01	24	1609.61	50-3/8 [1279.21]
569J-12D (RTPF)	208/230-3-60-460-3-60-575-3-60	516	234	185	84	117	53	83	38	131	59	19	1482.61	23	1584.21	24	1609.61	50-3/8 [1279.21]
569J-14D (RTPF)	208/230-3-60-460-3-60-575-3-60	654	297	214	97	155	70	120	54	165	75	20	1508.01	25	1635.01	24	1609.61	50-3/8 [1279.21]
575J-07A	208/230-3-60-460-3-60-575-3-60	444	201	134	61	97	44	90	41	123	56	22	1558.81	25	1635.01	13	1330.21	42-3/8 [1076.01]
575J-08(A,B)	208/230-3-60-460-3-60-575-3-60	483	219	162	74	110	50	85	39	125	57	20	1508.01	24	1609.61	21	1533.41	42-3/8 [1076.01]
575J-08(G,H)	208/230-3-60-460-3-60-575-3-60	523	237	174	79	118	54	96	44	135	61	21	1533.41	24	1609.61	23	1584.21	50-3/8 [1279.21]
575J-12A	208/230-3-60-460-3-60-575-3-60	575	261	186	84	126	57	106	48	157	71	21	1533.41	24	1609.61	23	1584.21	50-3/8 [1279.21]

**NOTES:**

1. MINIMUM CLEARANCE (LOCAL CODES OR JURISDICTION MAY PREVAIL):
  - A. BOTTOM TO COMBUSTIBLE SURFACES: 0 INCHES.
  - B. OUTDOOR COIL, FOR PROPER AIR FLOW: 36 INCHES ONE SIDE, 12 INCHES THE OTHER. THE SIDE GETTING THE GREATER CLEARANCE IS OPTIONAL. STANDARD CLEARANCES ON REMAINING TWO SIDES.
  - C. OVERHEAD: 60 INCHES, TO ASSURE PROPER OUTDOOR FAN OPERATION.
  - D. BETWEEN UNITS: CONTROL BOX SIDE, 42 INCHES PER NEC.
  - E. BETWEEN UNIT AND UNGROUNDED SURFACES: CONTROL BOX SIDE, 36 INCHES PER NEC.
  - F. BETWEEN UNIT AND BLOCK OR CONCRETE WALLS AND OTHER GROUNDED SURFACES: CONTROL BOX SIDE, 42 INCHES PER NEC.
2. WITH EXCEPTION OF THE CLEARANCE FOR THE OUTDOOR COIL AS STATED IN NOTE 1B, A REMOVABLE FENCE OR BARRICADE REQUIRES NO CLEARANCE.
3. UNITS MAY BE INSTALLED ON COMBUSTIBLE FLOORS MADE FROM WOOD OR CLASS A, B OR C ROOF COVERING MATERIAL.

**NOTE: MCHX units are not currently available.**

DATE	11/10/14	SUPERCEDES	10/20/11
CONDENSING UNIT	569J-A / 569J-D / 575J-A -	REV	H
38AU500350	07/08/12/14		

C14342



569J

# CERTIFIED DIMENSION 569J\*07, 08, 12, 14

UNITED TECHNOLOGIES STRACOSIDE, NY  
CONDENSING UNIT

P.O. BOX 4888  
THIS DOCUMENT IS THE PROPERTY OF UNITED TECHNOLOGIES STRACOSIDE, NY. IT IS TO BE USED ONLY FOR THE PURPOSES SPECIFIED HEREIN. NO PARTS OR CONTENTS WILL BE DISCLOSED OR USED WITHOUT UNITED TECHNOLOGIES STRACOSIDE, NY'S WRITTEN CONSENT.

SUBMISSION OF THESE DRAWINGS OR DOCUMENTS DOES NOT CONSTITUTE AN ACCEPTANCE OF LIABILITY OR WARRANTY BY UNITED TECHNOLOGIES STRACOSIDE, NY.

UNIT	SERVICE VALVE CONNECTIONS		QTY
	SUCTION	LIQUID	
569J-07A	1-1/8 [28.6]	3/8 [9.5]	1
569J-08A	1-1/8 [28.6]	1/2 [12.7]	1
569J-12A	1-3/8 [34.9]	1/2 [12.7]	1
569J-14A	1-3/8 [34.9]	5/8 [15.9]	2
569J-12B	1-1/8 [28.6]	3/8 [9.5]	2
569J-14B	1-1/8 [28.6]	3/8 [9.5]	2
575J-07A	1-1/8 [28.6]	1/2 [12.7]	1
575J-08A	1-1/8 [28.6]	1/2 [12.7]	1
575J-12A	1-3/8 [34.9]	1/2 [12.7]	1

CORNER "B"      CORNER "C"      CORNER "A"      CORNER "D"

**TOP VIEW**

REAR VIEW      LEFT SIDE VIEW      FRONT VIEW      RIGHT SIDE VIEW

**REAR VIEW**      **LEFT SIDE VIEW**      **FRONT VIEW**      **RIGHT SIDE VIEW**

(FOR 569J-D AND 575J-A SYSTEMS)      (FOR 569J-A AND 575J-A SYSTEMS)

OUTDOOR COIL

59-1/4 [1504]      59-1/8 [1500]

SUCTION CONNECTIONS (SEE CHART FOR SIZE)

LIQUID CONNECTIONS (SEE CHART FOR SIZE)

6-1/8 [155]      5 [126]

SUCTION CONNECTION (SEE CHART FOR SIZE)

LIQUID CONNECTION (SEE CHART FOR SIZE)

11-1/4 [285]      6-1/4 [158]      8 [202]

OPTIONAL FACTORY INSTALLED DISCONNECT

COMPRESSION ACCESS PANEL

HANDLE

46 [1168]      8-1/16 [205]

ELECTRICAL DISCONNECT LOCATION

OPTIONAL FACTORY INSTALLED CONVENIENCE OUTLET LOCATION

GUAGE ACCESS

FIELD ENTRY SERVICE PORT

3-3/4 [96]      13-1/4 [337]      1-3/8 [34.5]      1-3/4 [44.5]      6-5/8 [168]      4-1/2 [115]      8-1/16 [205]

DIRECTION OF AIR FLOW

DIMENSIONS IN [ ] ARE IN MM

CENTER OF GRAVITY

FORK TRUCK SLOTS (4 SIDES)

DATE 11/10/14	SUPERSEDES 10/20/11	CONDENSING UNIT 569J-A / 569J-D / 575J-A - 07/08/12/14	REV H
			38AU500350
			C14343

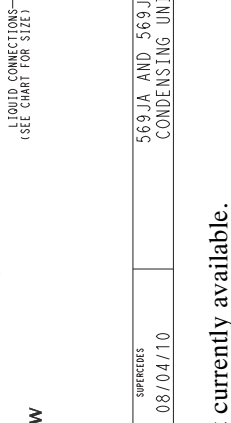
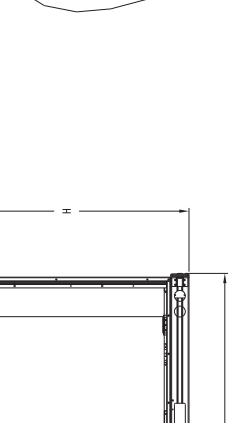
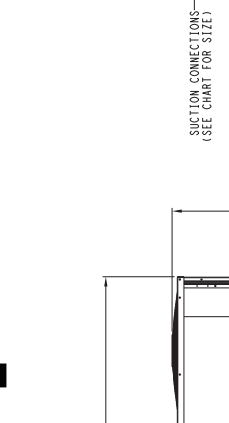
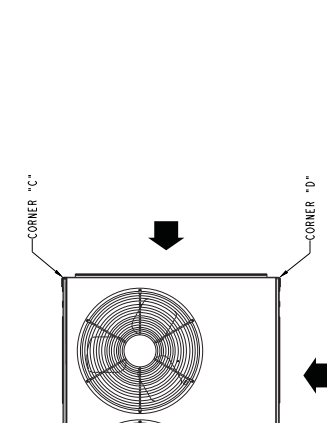
# CERTIFIED DIMENSION 569J\*16

UNITED TECHNOLOGIES SYPHRAUSE, NY 13221  
 P.O. BOX 4898  
 AND IS DELIVERED UPON THE EXPRESS CONDITION THAT THE PURCHASER'S ACCEPTANCE OF THESE DRAWINGS OR DOCUMENTS DOES NOT CONSTITUTE PART PERFORMANCE OR ACCEPTANCE OF CONTRACT.

UNIT	ELECTRICAL CHARACTERISTICS	STD. UNIT WT.				CORNER A				CORNER B				CORNER C				CORNER D				CENTER OF GRAVITY				UNIT HEIGHT			
		LBS.	KG.	LBS.	KG.	LBS.	KG.	LBS.	KG.	LBS.	KG.	LBS.	KG.	LBS.	KG.	LBS.	KG.	X	Y	Z	H	X	Y	Z	H				
569JA16 (MCHX)	208/230-3-60-460-3-60-575-3-60	633	288	290	100	134	61	135	61.5	144	65.5	38	1965.21	19	1482.61	15	1381.1	50-3/8	11279.21										
569JD16 (MCHX)	208/230-3-60-460-3-60-575-3-60	633	288	290	100	134	61	135	61.5	144	65.5	38	1965.21	19	1482.61	15	1381.1	50-3/8	11279.21										
569JA16 (RTPF)	208/230-3-60-460-3-60-575-3-60	731	332	337	107	172	78	135	61	186	84	38	1965.21	19	1482.61	17	1431.81	50-3/8	11279.21										
569JD16 (RTPF)	208/230-3-60-460-3-60-575-3-60	731	332	337	107	172	78	135	61	186	84	38	1965.21	19	1482.61	17	1431.81	50-3/8	11279.21										

UNIT	SERVICE VALVE CONNECTIONS		QTY
	SUCTION	LIQUID	
569JA16	1-2/8 (34.9)	5/8 (125.9)	1 EA
569JD16	1-2/8 (34.9)	1/2 (127.7)	2 EA

- NOTES:**
- MINIMUM CLEARANCE (LOCAL CODES OR JURISDICTION MAY PREVAIL):
    - A. OUTDOOR COIL TO COMBUSTIBLE SURFACES: 0 INCHES.
    - B. OUTDOOR COIL TO PROTECTIVE SURFACES: 36 INCHES.
    - C. ONE SIDE: 12 INCHES; THE OTHER: THE SIDE GETTING THE GREATER CLEARANCE IS OPTIONAL.
    - D. OVERHEAD: 60 INCHES; TO ASSURE PROPER OUTDOOR FAN CLEARANCE: 60 INCHES.
    - E. BETWEEN UNITS: CONTROL BOX SIDE, 42 INCHES PER NEC.
    - F. BETWEEN UNIT AND UNROUND SURFACES: CONTROL BOX SIDE, 36 INCHES PER NEC; CONCRETE WALLS AND OTHER UNROUND SURFACES: CONTROL BOX SIDE, 42 INCHES PER NEC.
  - WITH EXCEPTION OF THE CLEARANCE FOR THE OUTDOOR COIL AS STATED IN NOTE 1B, A REMOVABLE FENCE OR BARRICADE REQUIRES NO CLEARANCE TO THE UNIT. CLEARANCE TO UNFINISHED FLOORS MADE FROM WOOD OR CLASS "A, B OR C" ROOF COVERING MATERIAL.



DATE	11/18/10	SUPERVISORS	08/04/10
REV	38AU500504	569 JA AND 569 JD CONDENSING UNIT	F

C101255

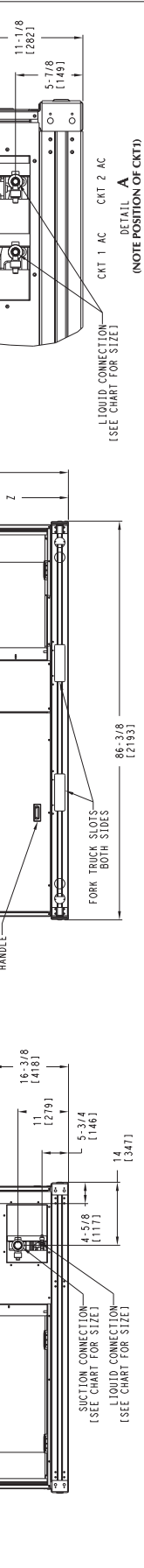
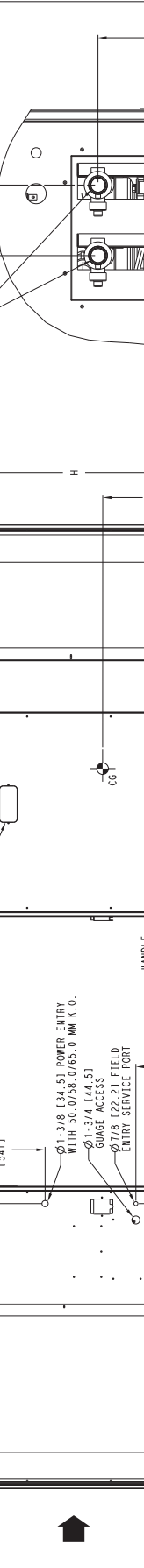
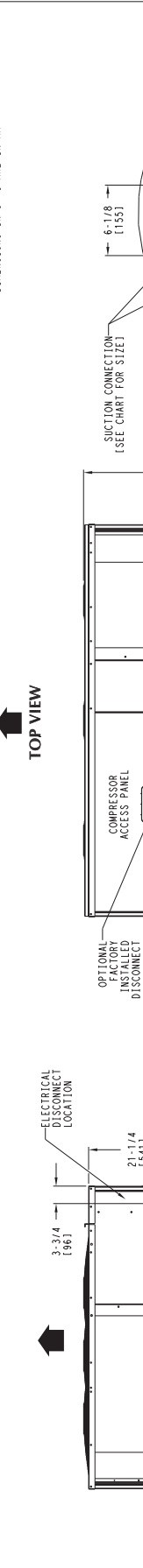
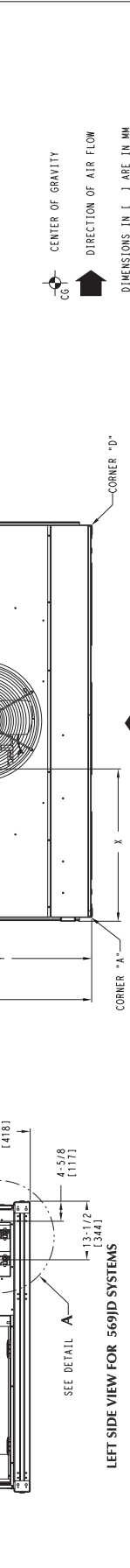
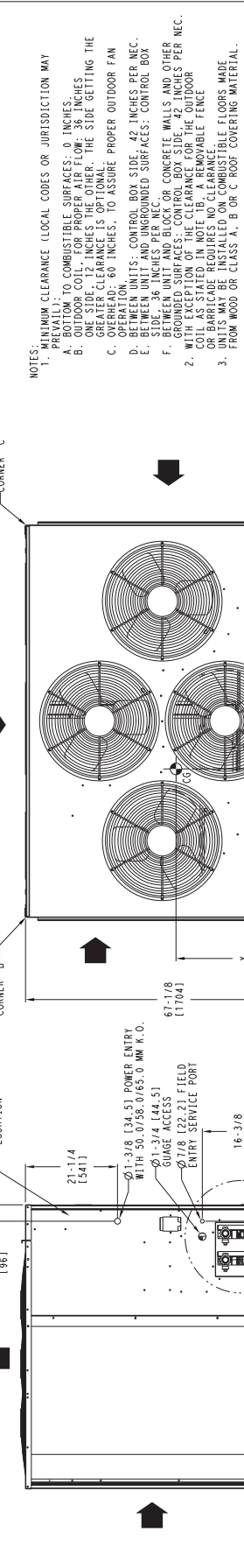
**NOTE: MCHX units are not currently available.**

569J

# CERTIFIED DIMENSION 569J\*25

UNIT	ELECTRICAL CHARACTERISTICS		CENTER OF GRAVITY				UNIT HEIGHT																
	STD.	UNIT WT.	CORNER A	CORNER B	CORNER C	CORNER D	X	Y	Z	H													
569JA25 (RTPF1)	2087/230	3-60	460-3-60	575-3-60	918	444	360	163	188	85	147	67	283	128	38	1965.2	23	1584.2	17	1431.8	50	378	11279.2
569JD25 (RTPF1)	2087/230	3-60	460-3-60	575-3-60	918	444	360	163	188	85	147	67	283	128	38	1965.2	23	1584.2	17	1431.8	50	378	11279.2

UNIT	SERVICE VALVE CONNECTIONS		QTY
	SUCTION	LIQUID	
569JA25	1-5/8 (141.3)	5/8 (115.9)	1 EA
569JD25	1-3/8 (134.9)	1/2 (127.7)	2 EA



**NOTES:**

- MINIMUM CLEARANCE (LOCAL CODES OR JURISDICTION MAY PREVAIL):
  - BOTTOM TO COMBUSTIBLE SURFACES: 0 INCHES.
  - OUTDOOR COIL, FOR PROPER AIR FLOW: 36 INCHES ONE SIDE, 12 INCHES THE OTHER. THE SIDE GETTING THE MOST AIR FLOW IS THE CLEARANCE SIDE.
  - OVERHEAD: 60 INCHES, TO ASSURE PROPER OUTDOOR FAN OPERATION.
  - BETWEEN UNITS: CONTROL BOX SIDE, 42 INCHES PER NEC.
  - BETWEEN UNIT AND UNGROUND SURFACES: CONTROL BOX SIDE, 42 INCHES PER NEC.
  - BETWEEN UNIT AND BLOCK OR CONCRETE WALLS AND OTHER GROUNDED SURFACES: CONTROL BOX SIDE, 42 INCHES PER NEC.
- WITH EXCEPTION OF THE CLEARANCE FOR THE OUTDOOR COIL, ALL CLEARANCES MUST BE MEASURABLE FENCE TO FENCE CLEARANCES.
- UNITS MAY BE INSTALLED ON COMBUSTIBLE FLOORS MADE FROM WOOD OR CLASS A, B OR C ROOF COVERING MATERIAL.

CG → CENTER OF GRAVITY  
 → DIRECTION OF AIR FLOW  
 DIMENSIONS IN [ ] ARE IN MM

DATE	SUPERSEDERS	REV
11/24/10	08/04/10	E
569JA AND 569JD CONDENSING UNIT	38AU500371	



