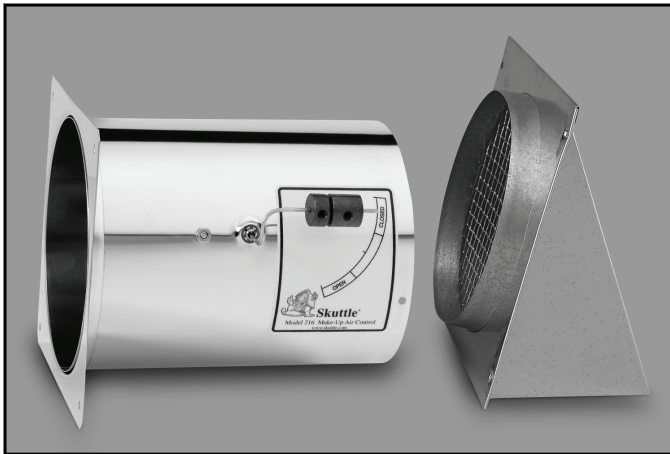


Model 216

Self-Adjusting Make-Up Air Control Provides Filtered Fresh Air



Installation Package includes 6" inlet hood, mounting hardware, mounting template, installation instructions and an allen wrench for adjustment.

Specifications

For conventional forced air heating systems up to 250,000 BTUs. Fresh air supply with 6" air intake:

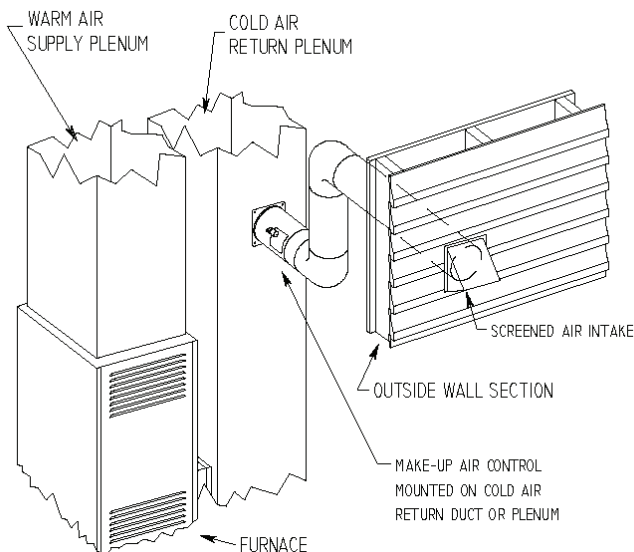
@ .05 static pressure 74 cubic ft./min.*

@ .10 static pressure 104 cubic ft./min.*

*expressed in inches of water column

- Fresh Air Intake (Model 216-1)..... 6" diameter
- Fresh Air Intake (Model 216-2)..... 4" diameter

Note: Model 216-2 comes with 4" intake hood and 6"-to-4" reducer.

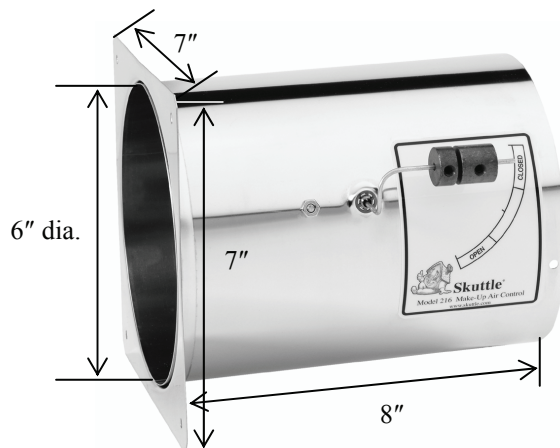


Features & Benefits

- **Combats interior air pollution** created by today's tightly constructed homes
- **Reduces drafts** and uncontrolled air infiltration to provide year-round comfort
- **Improves furnace efficiency** by providing proper air for combustion
- **100 percent self-adjusting;** uses no electricity
- **Durable, corrosion-resistant, stainless steel construction** ensures long life
- **Appropriate for all warm-air heating systems**

Here's How It Works...

The Skuttle Model 216 Self-Adjusting Make-Up Air Control is installed on the return air plenum of the furnace. Six-inch insulated flex duct connects the Make-Up Air Control to a screened, fresh air inlet mounted on the outside of the home. When the furnace blower operates, the damper in the Make-Up Air Control opens, automatically pulling outside air into the furnace. The air is cleaned by the filter, heated or cooled, and circulated through the duct system. As a result, a slight pressure builds up in the home, preventing unwanted air infiltration around windows and doors.



**Quality Made
in the USA**