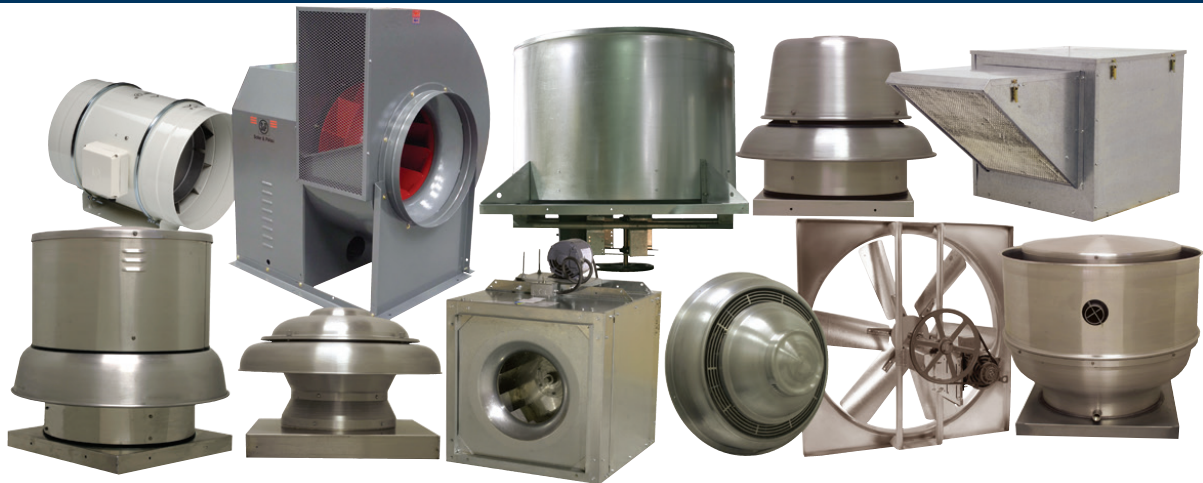




# Commercial and Residential Product Line Overview



**Centrifugal Roof & Wall Exhausters • Centrifugal Filtered Supply  
Propeller Roof Ventilators • Propeller Wall Fans • Recovery Ventilators  
Utility Sets • Ceiling/Cabinet Fans • Gravity Ventilators  
Inline Duct Fans • Upblast Restaurant Exhausters**





## Residential/Light Commercial

### MODEL TD



Sizes 100 to 315  
100 to 1,050 CFM  
Static pressure to 1"  
AMCA Seal for Air  
cULus Listed  
HVI Certified  
ENERGY STAR® Qualified  
In-Stock Availability

### MODEL TD-SILENT



Sizes 100X to 200  
100 to 530 CFM  
Static pressure to 1"  
cULus Listed  
HVI Certified  
ENERGY STAR® Qualified  
In-Stock Availability

### MODEL PV



Sizes 100 to 315  
100 to 940 CFM  
Static pressure to 1-1/2"  
AMCA Seal for Air  
cULus Listed  
HVI Certified  
ENERGY STAR® Qualified\*  
In-Stock Availability

### MODEL SWF



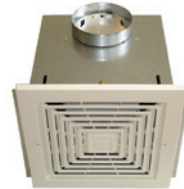
Sizes 100 to 200  
100 to 400 CFM  
Static pressure to 1-1/2"  
cULus Listed  
HVI Certified  
In-Stock Availability

### MODEL PC



Sizes 50 to 150  
50 to 150 CFM  
AC or DC Motors Available  
Low Profile Models Available  
Static pressure to 1"  
HVI Certified  
cETLus Listed  
ENERGY STAR® Qualified  
Lighted & Motion Sensor Grilles  
In-Stock Availability

### MODEL FF/FFC



Sizes 50 to 3500  
50 to 3,600 CFM  
Static pressure to 1"  
AMCA Seal for Air & Sound  
cULus Listed  
In-Stock Availability

## Energy Recovery Ventilators

### MODEL TR (ERV)



Sizes 90 to 300  
40 to 310 CFM  
Static pressure to 1"  
cULus Listed  
HVI Certified  
In-Stock Availability

### MODEL TRC (Light Commercial ERV)



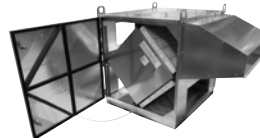
Sizes 500 & 800  
200 to 970 CFM  
Static pressure to 1-1/2"  
cULus Listed  
AHRI Certified  
In-Stock Availability

### MODEL HR (HRV)



Sizes 100 to 220  
30 to 220 CFM  
HVI Certified  
Top & Side Port Options  
In-Stock Availability

### MODEL CRT (Outdoor Cabinet with Cores)



3 Models with 2, 3 or 4 cores  
500 to 4,400 CFM  
AHRI Certified Core

## Inline Tubeaxial

### DIRECT DRIVE MODELS

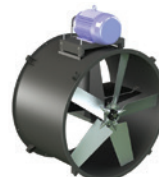
#### MODEL TDD



Sizes 12 to 48  
800 to 39,000 CFM  
Static pressure to 1-1/4"  
AMCA Seal for Air  
cULus Listed

### BELT DRIVE MODELS

#### MODEL TDB



Sizes 12 to 60  
900 to 75,490 CFM  
Static pressure to 1-1/2"  
AMCA Seal for Air & Sound  
cULus Listed

## Centrifugal Roof and Sidewall

### DIRECT DRIVE MODELS

#### MODEL LPD



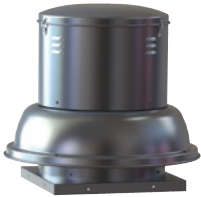
Sizes 6 to 8  
50 to 420 CFM  
Static pressure to 1-3/4"  
AMCA Seal for Air & Sound  
cULus Listed  
Sidewall mount available  
In-Stock Availability

#### MODEL CWD



Sizes 7 to 16  
150 to 3,360 CFM  
Static pressure to 1"  
AMCA Seal for Air & Sound  
cULus Listed  
In-Stock Availability

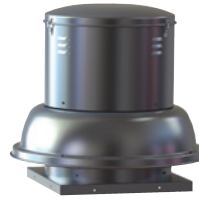
#### MODEL SDBD



Sizes 6 to 16  
40 to 4,135 CFM  
Static pressure to 1-1/2"  
AMCA Seal for Air & Sound  
cULus Listed

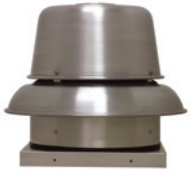
### BELT DRIVE MODELS

#### MODEL SDB



Sizes 6 to 16  
131 to 4,135 CFM  
Static pressure to 1-1/2"  
AMCA Seal for Air & Sound  
cULus Listed  
In-Stock Availability

#### MODEL RED/eRED



Sizes 6 to 15  
40 to 3,000 CFM  
Static pressure to 1"  
AC & EC Motors  
AMCA Seal for Air & Sound  
cULus Listed  
In-Stock Availability

#### MODEL DB



Sizes 6 to 48  
100 to 28,000 CFM  
Static pressure to 1-1/4"  
AMCA Seal for Air & Sound  
cULus Listed  
In-Stock Availability

#### MODEL STXD/STXD-RHUL



Sizes 6 to 16  
55 to 4,780 CFM  
Static pressure to 1-1/2"  
AMCA Seal for Air & Sound  
cULus 705 or 762 Listed  
Sidewall mount available  
In-Stock Availability

#### MODEL STXB/STXB-RHUL



Sizes 8 to 16  
200 to 3,975 CFM  
Static pressure to 1-1/2"  
AMCA Seal for Air & Sound  
cULus 705 or 762 Listed  
Sidewall mount available  
In-Stock Availability

#### MODEL TXD/TXD-RHUL



Sizes 6 to 15  
250 to 3,400 CFM  
Static pressure to 1-1/4"  
AMCA Seal for Air & Sound  
cULus 705 or 762 Listed  
Sidewall mount available

#### MODEL TXB/TXB-RHUL



Sizes 8 to 48  
250 to 35,000 CFM  
Static pressure to 3-1/4"  
AMCA Seal for Air & Sound  
cULus 705 or 762 Listed  
Sidewall mount available  
In-Stock Availability

## Roof Supply Fans

### BELT DRIVE MODELS

#### MODEL KSF



Sizes 9 to 20  
375 to 12,000 CFM  
Static pressure to 2"  
AMCA Seal for Air & Sound  
cULus Listed  
Intake extension available  
In-Stock Availability

#### MODELS CSF & LSF



Sizes 9 to 20  
375 to 13,600 CFM  
Static pressure to 2"  
AMCA Seal for Air  
cULus Listed  
Hooded or Louvered housings



## Centrifugal Inline Fans

### BELT DRIVE MODELS

#### MODEL SQB



Sizes 7 to 42  
100 to 24,500 CFM  
Static pressure to 3-1/2"  
AMCA Seal for Air & Sound  
cULus Listed  
In-Stock Availability

#### MODEL CFD



Sizes 7 to 15  
200 to 5,800 CFM  
Static pressure to 2.5"  
AMCA Seal for Air & Sound  
cULus Listed  
In-Stock Availability

#### MODEL CTB/CTB-RHUL



Sizes 9 to 42  
300 to 20,000 CFM  
Static pressure to 2-1/2"  
AMCA Seal for Air & Sound  
cULus 705 or 762 Listed

### DIRECT DRIVE MODELS

#### MODEL SQD/eSQD

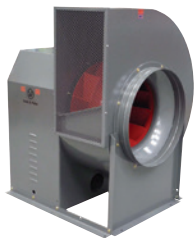


Sizes 6 to 15  
150 to 2,800 CFM  
Static pressure to 1"  
AC & EC Motors  
AMCA Seal for Air & Sound  
UL Listed  
In-Stock Availability

## Utility Exhaust/Supply Fans

### BELT DRIVE MODELS

#### MODEL CM/CM-RHUL/CM-HT (Medium Duty)



Sizes 10 to 36  
500 to 25,000 CFM  
Static pressure to 5.5"  
AMCA Type C Spark Resistant  
Option Available  
AMCA Seal for Air & Sound  
cULus 705, 762, & 793 Listings  
In-Stock Availability

## Propeller Sidewall Fans

### DIRECT DRIVE MODELS

#### LOW PRESSURE

##### MODEL GED/GSD



Sizes 10 to 20  
200 to 3,500 CFM  
Static pressure to 3/4"  
AMCA Seal for Air & Sound  
cULus Listed  
In-Stock Availability

#### MEDIUM PRESSURE

##### MODEL DFE/DFS



Sizes 10 to 30  
500 to 12,000 CFM  
Static pressure to 1"

#### HIGH PRESSURE

##### MODEL DDE/DDS



Sizes 24 to 60  
3,500 to 55,800 CFM  
Static pressure to 1"

### BELT DRIVE MODELS

#### LOW PRESSURE

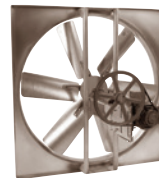
##### MODEL LCE/LCS



Sizes 20 to 60  
3,000 to 40,000 CFM  
Static pressure to 5/8"  
AMCA Seal for Air & Sound  
cULus Listed  
In-Stock Availability

#### MEDIUM PRESSURE

##### MODEL L2E/L2S



Sizes 24 to 60  
5,000 to 47,000 CFM  
Static pressure to 1"  
AMCA Seal for Air & Sound  
cULus Listed

#### HIGH PRESSURE

##### MODEL L3E/L3S



Sizes 42 to 72  
35,000 to 85,000 CFM  
Static pressure to 1"  
AMCA Seal for Air & Sound  
cULus Listed

## Propeller Roof Ventilators

### DIRECT DRIVE MODELS

#### MODEL ARE/ARS



Sizes 10 to 20  
270 to 3,100 CFM  
Static pressure to 3/4"  
UL Listed  
AMCA Seal for Air & Sound  
In-Stock Availability

#### MODEL HRED-C (EXHAUST)



Sizes 24 to 60  
1,200 to 48,800 CFM  
Static pressure to 3/4"  
AMCA Seal for Air  
Reversible models available

#### MODEL HRSD (SUPPLY)



Sizes 24 to 54  
2,500 to 50,100 CFM  
Static pressure to 3/4"  
Filtered models available  
Reversible models available

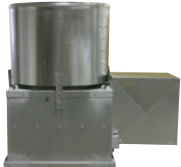
#### MODEL UBX (EXHAUST)



Sizes 24 to 72  
5,200 to 65,500 CFM  
Static pressure to 1/2"  
AMCA Seal for Air & Sound

### REMOTE DRIVE MODELS

#### MODEL UBRD (EXHAUST)



Sizes 24 to 72  
4,400 to 72,700 CFM  
Static pressure to 1/2"

#### MODEL UBSRD/UBSRD-HT/UBSRD-HT1 (EXHAUST)



Sizes 24 to 60  
5,000 to 52,000 CFM  
Static pressure to 3/4"  
cULus Listed  
UL-793 Hi-Temperature for Heat & Smoke Removal (UBSRD-HT1 ONLY)

### BELT DRIVE MODELS

#### MODEL UBS (EXHAUST)



Sizes 24 to 60  
3,730 to 51,000 CFM  
Static pressure to 1/2"  
cULus Listed

#### MODEL HREB-C (EXHAUST)



Sizes 24 to 60  
1,200 to 48,400 CFM  
Static pressure to 3/4"  
AMCA Seal for Air  
cULus Listed  
Reversible models available

#### MODEL HRSB (SUPPLY)



Sizes 24 to 60  
2,700 to 52,500 CFM  
Static pressure to 3/4"  
UL Listed  
Filtered models available  
Reversible models available

#### MODEL UBB (EXHAUST)



Sizes 24 to 72  
4,800 to 78,200 CFM  
Static pressure to 1/2"  
AMCA Seal for Air & Sound  
cULus Listed

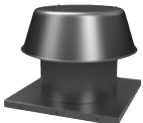
#### MODEL TUB/TUB-HT (EXHAUST)



Sizes 24 to 60  
4,500 to 60,000 CFM  
Static pressure to 1"  
UL-793 Hi-Temperature for Heat & Smoke Removal (TUB-HT)

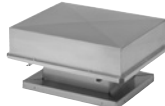
## Gravity Vents Intake/Relief

#### MODEL RCXII & RCXII-SF



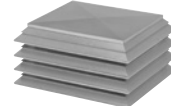
Sizes 6 to 36  
90 to 10,400 CFM  
Static pressure to .350"  
Curb mounted or  
Self-Flashing  
In-Stock Availability

#### MODEL BGH



Sizes 12 x 12 to  
72 x 144  
500 to 90,000 CFM  
Static pressure to 1/4"

#### MODEL RLX



Sizes 12 x 12 to  
60 x 120  
400 to 69,500 CFM  
Static pressure to 1/5"

# QUICK SELECTION & WARRANTY GUIDE



Model	Mounting Location				Airflow		Application							Drives		Impeller Type			Warranty			
	Roof Curb	Floor/Base	Hanging	Wall	Ceiling	Exhaust	Supply	General/Clean Air	Contaminated Air	Spark Resistant	Grease/Restaurant (UL762)	Smoke Control (UL)	High Temp above 200° F	Energy Recovery	Heat Recovery	Belt	Direct	Centrifugal	Propeller	Mixed Flow	Fan (years)	Motor (years)
<b>Residential/Light Commercial</b>																						
TD					X	X	X	X									X			X	5	-
TD-SILENT					X	X	X	X									X			X	5	-
PV					X	X	X	X									X				5	-
SWF				X	X	X	X	X									X				5	-
PC/PCD/PCLP				X	X	X	X	X									X				5	-
FF/FFC			X		X	X	X	X									X				1	1
<b>Recovery Ventilators (ERVs &amp; HRVs)</b>																						
TR			X		X	X	X	X	X					X			X					* See Note
TRC					X	X	X	X	X					X			X					* See Note
CRT					X	X	X	X	X					X								* See Note
HR					X	X	X	X	X								X					* See Note
<b>Centrifugal Roof and Sidewall Fans</b>																						
LPD	X			X		X		X	X	X							X				5	3
SDBD/RED/eRED	X					X		X	X								X				5	1
SDB/DB	X					X		X	X							X					5	1
STXB/TXB	X			X		X		X	X							X					5	1
STXB-RHUL/TXB-RHUL	X					X		X	X	X			X			X					2	1
STXD/TXD	X			X		X		X	X								X				5	1
STXD-RHUL/TXD-RHUL	X					X		X	X	X			X				X				2	1
CWD				X		X		X	X	X							X				5	1

Centrifugal Filtered Supply												
CSF/LSF	X									X		5
KSF	X									X		5
Centrifugal Inline												
SQB		X	X	X	X	X	X	X	X	X		2
SQD/eSQD		X	X	X	X	X	X	X	X	X		2
CFD		X	X	X	X	X	X	X	X	X		2
CTB		X	X	X	X	X	X	X	X	X		2
CTB-RHUL		X	X	X	X	X	X	X	X	X		2
Propeller Sidewall Fans												
LC/L2/L3				X	X	X	X	X	X	X		2
G/DD/DF				X	X	X	X	X	X	X		5
Propeller Roof Ventilators												
HRSD/HRSD	X									X		2
HREB-C/HRED-C	X				X					X		2
ARE/ARS	X				X					X		5
UBS	X				X					X		2
UBSRD	X				X					X		2
UBSRD-HT/HT-1	X				X	X				X		1
UBB/UBX	X				X	X				X		2
UBRD	X				X	X				X		2
TUB	X				X	X				X		2
TUB-HT	X				X	X	X	X	X	X		1
Inline Tubeaxial												
TDB		X	X	X	X	X	X	X	X	X		2
TDD		X	X	X	X	X	X	X	X	X		2
Utility Sets												
CM		X	X	X	X	X	X	X	X	X		5
CM-RHUL		X	X	X	X	X	X	X	X	X		2
CM-HT		X	X	X	X	X	X	X	X	X		2
Gravity Vents Intake/Relief												
RCXII	X	X			X	X	X	X	X	X		5
BGH	X				X	X	X	X	X	X		5
RLX	X				X	X	X	X	X	X		5

\*Models TR, TRC and CRT (ERVs) have a 10-year core warranty and a 5-year warranty on the balance of the TR unit and a 2-year warranty on the balance of the TRC and CRT units. HR (HRVs) have a limited lifetime core warranty and 5-year warranty on the balance of the unit.

We also offer a complete line of Dampers, Shutters and Louvers.  
Contact us for information on the entire line.

**AUTO EXHAUST DAMPER  
MODELS 411 & 611**



Sizes: 8" W x 8" H to 48" W x 48" H  
Maximum free area velocity – 2,250 fpm  
Non-flanged horizontal mount exhaust  
Galvanized steel frame with aluminum blades

**AUTOMATIC WALL SHUTTER-SINGLE PANEL  
MODEL 502**



Sizes: 10" W x 10" H to 24" W x 24" H  
Maximum free area velocity – 2,000 fpm  
Rear flanged low velocity gravity exhaust  
Galvanized steel frame with mill finished aluminum blades  
Double panel shutters available (Model 556)

**AUTOMATIC WALL SHUTTER  
MODEL EASB & EASW**



Sizes: 36", 39", 51", 54" Square  
Maximum free area velocity – 1,500 fpm  
Rear flanged low velocity gravity exhaust  
Painted aluminum frame with UV stabilized PVC blades

**ALUMINUM or STEEL MOTORIZED DAMPER  
MODEL AMD or GMD**



Sizes: 12" W x 12" H to 48" W x 48" H  
Maximum free area velocity – 3,500 fpm  
Heavy duty motorized volume control  
Extruded aluminum (AMD) or Galvanized Steel (GMD)  
Internally mounted factory installed 120/240 volt power open/spring closed motor with end switch

**ALUMINUM or STEEL FIXED LOUVER  
MODEL AFL & GFL**



Sizes: 18" W x 18" H to 48" W x 48" H  
Aluminum (AFL) or Galvaneal Steel (GFL)  
Standard birdscreen on back

**EXTRUDED ALUMINUM DRAINABLE BLADE  
FIXED LOUVER  
MODEL DFL**



Sizes: 18" W x 18" H to 48" W x 48" H  
Drainable blades  
Extruded Aluminum  
Standard birdscreen on back

**EXTRUDED ALUMINUM COMBINATION  
LOUVER/DAMPER  
MODEL ACL**



Sizes: 18" W x 18" H to 48" W x 48" H  
Fixed blades in front, adjustable rear blades  
Extruded Aluminum  
Standard birdscreen on back



**ALUMINUM or STEEL DOOR LOUVER  
MODEL ADL or GDL**



8 Sizes  
Extruded Aluminum (ADL) or Painted Steel (GDL)  
204-R1 Clear anodized finish (ADL) or Gray primer finish (GDL)



S&P USA Ventilation Systems, LLC S&P Canada Ventilation Products, Inc.

6393 Powers Avenue  
Jacksonville, FL 32217  
P. 904-731-4711 · F. 904-737-8322  
www.spvg-northamerica.com

5600 Ambler Drive  
Mississauga, ON L4W 2K9 - Canada  
Tel. 416-744-1217 · Fax 416-744-0887  
www.solerpalaucanada.com